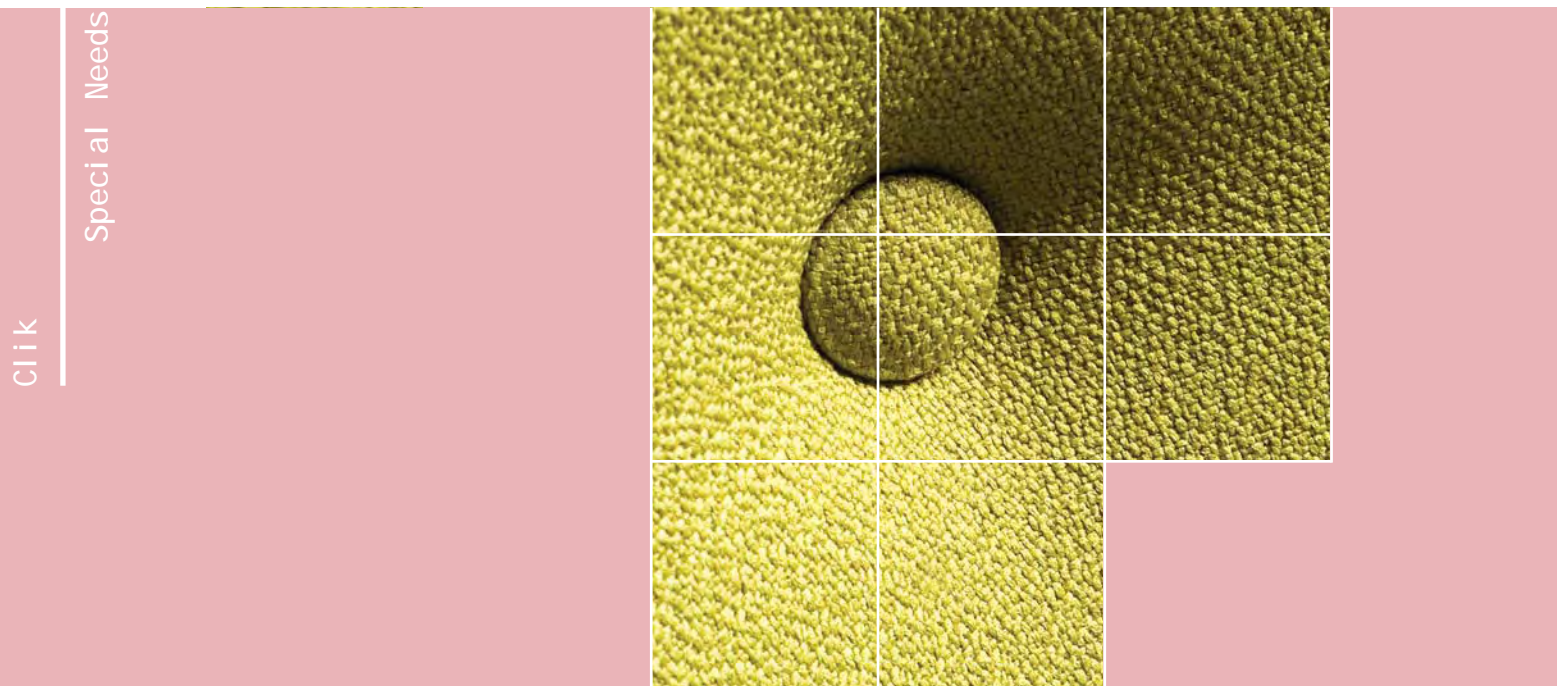


Clik

Special Needs

Full back height adjustability combined with the Pelvic Posture principle of pelvic support makes Clik and its options a versatile seating solution.

Optional chrome arms and polished aluminium base provide the fine detail to create an executive look to the range.



Clik

Special Needs



clk33a



clk6a



clk21c



clk22c



clk38a



clk38a

Mechani sms

- P
- A
- S
- SS

Clik

Special Needs

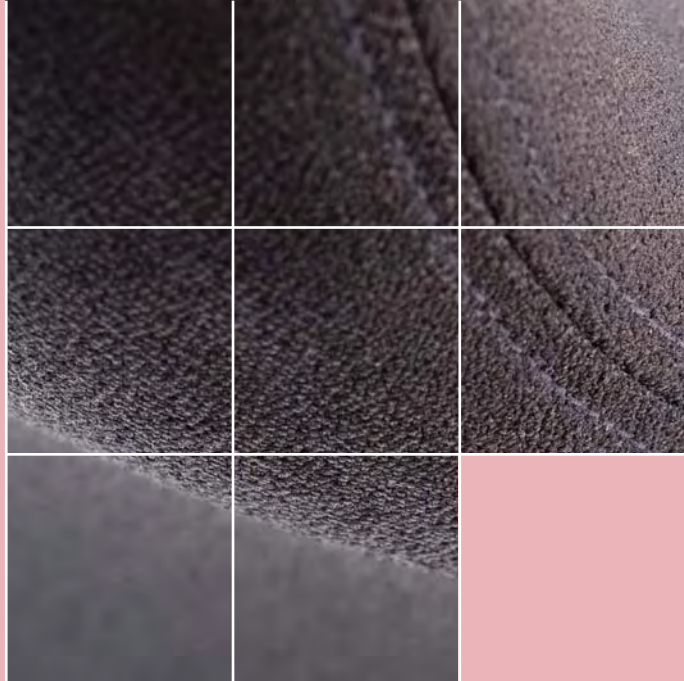
Ethos

Special Needs

A very high specification chair, designed to provide superb comfort. Standard features include inflatable lumbar, independent seat and back mechanism and integral seat slide.

Two back shapes, seat pads and arm styles are also available, with an additional head rest option.

Ethos
Special Needs



et23b



et26a



et29a



et27a



et29a



et29a

Mechani sms

A

SS

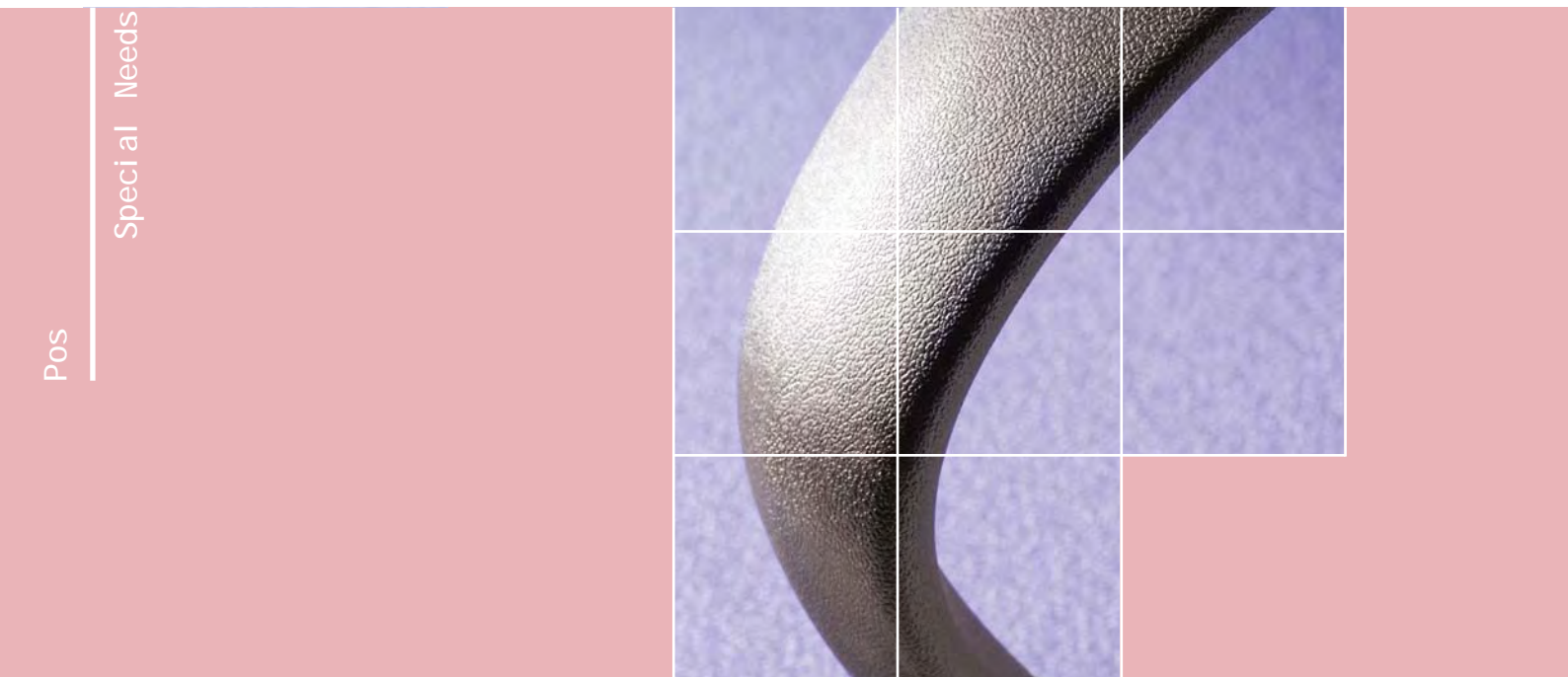
Ethos
Special Needs

Pos

Special Needs

Combining the Pelvic Posture principle of pelvic support, Pos delivers an alternative back care solution and a unique design for the discerning user.

Independent seat and back adjustability, permanent contact back or fully synchronised action can be chosen with the back height adjustment.



pos14c



pos14c

- Mechani sms
- P
 - A
 - S
 - SS



pos2c



pos33c



pos21c



pos22c

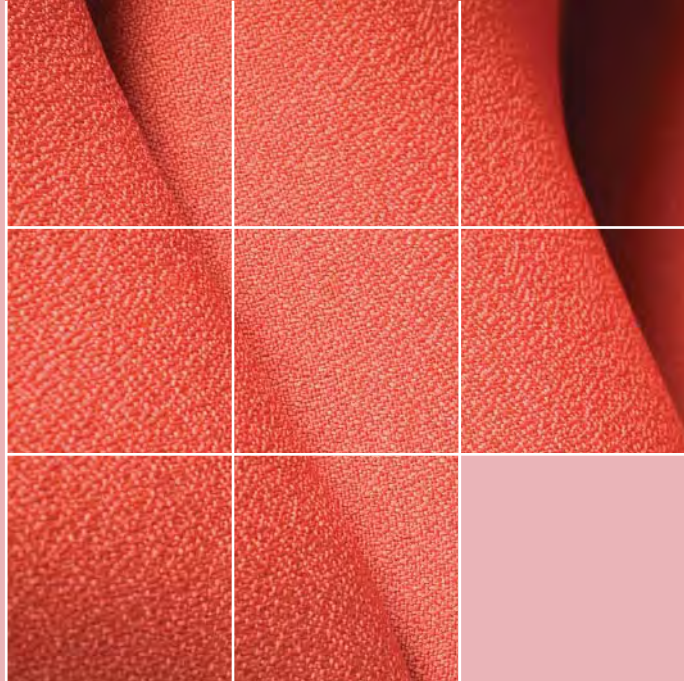
Task

Special Needs

A well-proportioned executive range offers a choice of medium and high back options, both available with fine stitching detail. Two choices of mechanism both with body weight tension adjustment are available.

This range incorporates the Pelvic Posture Principle of pelvic support.

Task
Special Needs



20-20



20-20

Task
Special Needs

Mechani sms

- A
- S
- SS



20-20/HR



20-20/NA



20-25



20-30

Fabrics

& Options

Fabrics

Please contact our Sales Office for prices on all other fabrics and leathers not specified here.

COM

We cannot accept any liability for a fabric after it has been upholstered, but are willing to offer advice to suitability.

Leather

As leather is a natural skin, there will be individual grains, natural skin markings and shade variations. These markings are features of the skin and are not faults.

Group 1

BRADBURY Millstream
BRADBURY Milldale Plus
INTERFACE Advantage
INTERFACE Advantage Ace
INTERFACE Phoenix
INTERFACE Plaza
COM Fabric

Group 2

BRADBURY Excel Plus
BRADBURY Flambled
INTERFACE Castell Plus
INTERFACE Chateau Plus
INTERFACE Crescendo Plus
INTERFACE Mainline Plus
INTERFACE X-Factor Plus
INTERFACE Xtreme Plus
VALMIC Classic (Trimcell)

Group 3

ABBOTSFORD Feast
BRADBURY Chancery
BRADBURY Infinite
GABRIEL Gaja
GABRIEL Pixel
INTERFACE Complements Plus
INTERFACE Hi-Tec
INTERFACE Marathon
INTERFACE New Aquarius
INTERFACE 24/7 Plus
INTERFACE Xtra Care Plus Pattern
INTERFACE Xtra Care Plus Plain
INTERFACE Xtra Care Plus Soft
INTERFACE Velvetine Plus
INTERFACE Virtual
COM Leather

Group 4

INTERFACE Airspace
INTERFACE Earth
INTERFACE Fire
KVADRAT Pause 3
KVADRAT Prato
SPECTRUM Colour Palette Vinyl
VALMIC Ambla Richmond Vinyl
VALMIC Ambla Tinto Vinyl
VALMIC Ambla Woodland Vinyl

Group 5

ABBOTSFORD Ocean
ABBOTSFORD River
ABBOTSFORD Terrain
BUTE Clyde
BUTE Elgin
BUTE Grampian
KVADRAT Canyon
KVADRAT Flora 2
KVADRAT Topas 2
INTERFACE Vitesse Plus

Group 6

CAMIRA Leather

Group 8

ANDREW MUIRHEAD Leather
BRIDGE OF WEIR Leather

Castors & Glides

Brake Loaded Castors (set of 5) add £9.00
Brake Un-Loaded Castors (set of 5) add £9.00
Soft Wheel Castors (set of 5) add £9.00
Glides (set of 5) No Extra

Gas Lifts

Checkout Gas Lift add £25.00
Draughtsman Gas Lift add £25.00

Bases

Wooden Base (uplift from plastic) add £63.00

Footring

Chrome Footring (500mm) add £40.00

Wood Finishes

Our standard finishes are Light Oak, Pear, Teak, Rosewood and Mahogany. Special staining to match existing furniture is available at an additional 5% on the Group 1 price of the chair.

Dimensions

Standards & Mechanisms

Dimensions

The following dimensions are available for all of our seating:

Back Height, Seat Height, Seat Depth, Overall Depth, Overall Width & Back Width.

Floor to Arm Height has also been included on all visitors and leg chairs. All dimensions are measured in millimetres and are approximate. Please contact our sales office for any further information or dimensions.

Standards

All seating manufactured by Pledge Office Chairs is manufactured to conform to all relevant British and European standards.

"The company is committed to continual improvement of its environmental performance. Our policy is to meet and where practical, exceed all relevant regulatory requirements and to manage the Company's activities in ways which keep environmental impact to a practicable minimum."

All products are covered by a 5 year guarantee. Please see terms and conditions for full details. Gas pistons support 150kgs.

Mechanisms

Tilt

Lockable in an upright position
Tilts from central pivot
Single lever gas and tilt action
Body weight tensioner
Seat height adjustment



Multi set

Independent seat & back movement
Infinite locking or free float
Back height adjustment
Body weight tensioner
Seat height adjustment



PCB

Permanent contact back movement
Lockable in various positions
Static seat
Safety release mechanism
Body weight tensioner
Seat height adjustment



Knee Tilt

Tilts from forward pivot point
Lockable in various positions
Safety release mechanism
Body weight tensioner
Seat height adjustment



Back Rake

Static seat
Infinite locking back rake
Back height adjustment
Seat height adjustment



Asynchron

Permanent contact back movement
Independent seat adjustment
Lockable in various positions
Body weight tensioner
Seat height adjustment



Synchro

Synchronised seat & back movement
Lockable in various positions
Safety release mechanism
Body weight tensioner
Seat height adjustment



Seat Slide

(Optional)
Increased seat depth of 60mm
Available with B, P, M, A & S mechanisms



Dimensions & Standards

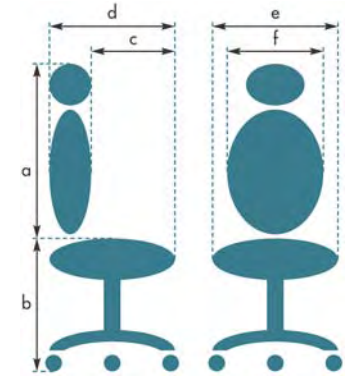
Special Needs

Standard Features: -

- Pelvic Posture Principle
- Height Adjustable Back
- Seat Height Adjustment
- Choice of PCB, Synchro or Asynchron Mechanisms
- Fixed Ring Arms
- Chrome Adjustable Arms (Height & Width)
- CMHR Moulded Foam
- Black Moulded Base



- a = Back Height
- b = Seat Height
- c = Seat Depth
- d = Overall Depth
- e = Overall Width
- f = Back Width
- g = Floor to Arm Height
(cantilever & leg chairs only)



Code	Back	Mechanism	Arms	Finish	GP1	GP2	GP3	GP4	GP5	GP6	GP8
POS1B	Medium	PCB		Black	273	282	300	318	345	404	422
POS11B	Medium	Asynchron		Black	288	297	315	333	360	419	437
POS31B	Medium	Synchro		Black	288	297	315	333	360	419	437
POS2B	Medium	PCB	Fixed Arms	Black	306	315	333	351	378	437	455
POS12B	Medium	Asynchron	Fixed Arms	Black	321	330	348	366	393	452	470
POS32B	Medium	Synchro	Fixed Arms	Black	321	330	348	366	393	452	470
POS3B	Medium	PCB	Adjustable Arms	Black	328	337	355	373	400	459	477
POS13B	Medium	Asynchron	Adjustable Arms	Black	343	352	370	388	415	474	492
POS33B	Medium	Synchro	Adjustable Arms	Black	343	352	370	388	415	474	492
POS4B	Medium	PCB	Adj. Arms & Leather Pads*	Black	360	369	387	405	432	491	509
POS14B	Medium	Asynchron	Adj. Arms & Leather Pads*	Black	375	384	402	420	447	506	524
POS34B	Medium	Synchro	Adj. Arms & Leather Pads*	Black	375	384	402	420	447	506	524
POS21B	Medium	Cantilever		Black	252	261	279	297	324	383	401
POS22B	Medium	Cantilever	Fixed Arms	Black	285	294	312	330	357	416	434

Options

C	Polished Aluminium Base	£26
C	Chrome Cantilever	£30
M	Memory Seat Foam	£15
SS	Seat Slide	£30

*Black Leather pads on top with chair fabric underneath

Example Coding :- POS14C

Medium Back Chair
Synchro Mechanism
Chrome Adjustable Arms with Leather Arm Pads
Polished Aluminium Base

Code	A	B	C	D	E	F	G	MTR
POS1B	520-580	460-570	470	590	530	520		1.55
POS11B	520-580	460-570	470	590	530	520		1.55
POS31B	520-580	460-570	470	590	530	520		1.55
POS2B	520-580	460-570	470	590	600	520		1.55
POS12B	520-580	460-570	470	590	600	520		1.55
POS32B	520-580	460-570	470	590	600	520		1.55
POS3B	520-580	460-570	470	590	610	520		1.55
POS13B	520-580	460-570	470	590	610	520		1.55
POS33B	520-580	460-570	470	590	610	520		1.55
POS4B	520-580	460-570	470	590	630	520		1.55
POS14B	520-580	460-570	470	590	630	520		1.55
POS34B	520-580	460-570	470	590	630	520		1.55
POS21B	530	440	470	640	530	520		1.55
POS22B	530	440	470	640	600	520	670	1.55

Dimensions

POS

Special Needs

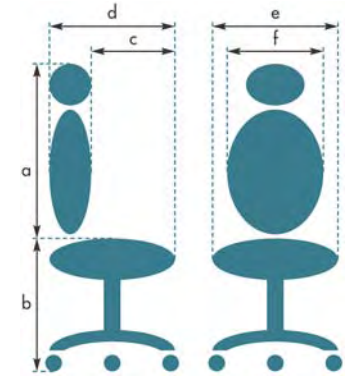
Special Needs

Standard Features: -

- Pelvic Posture Principle
- Medium or High Back
- Height Adjustable Back
- Seat Height Adjustment
- Choice of PCB, Synchro or Asynchron Mechanisms
- Fixed Ring Arms
- Chrome Adjustable Arms (Height & Width)
- CMHR Moulded Foam
- Black Moulded Base



- a = Back Height
- b = Seat Height
- c = Seat Depth
- d = Overall Depth
- e = Overall Width
- f = Back Width
- g = Floor to Arm Height
(cantilever & leg chairs only)



Code	Back	Mechanism	Arms	Finish	GP1	GP2	GP3	GP4	GP5	GP6	GP8
CLK1B	Medium	PCB		Black	306	315	333	351	378	437	455
CLK11B	Medium	Asynchron		Black	321	330	348	366	393	452	470
CLK31B	Medium	Synchro		Black	321	330	348	366	393	452	470
CLK2B	Medium	PCB	Fixed Arms	Black	339	348	366	384	411	470	488
CLK12B	Medium	Asynchron	Fixed Arms	Black	354	363	381	399	426	485	503
CLK32B	Medium	Synchro	Fixed Arms	Black	354	363	381	399	426	485	503
CLK3B	Medium	PCB	Adjustable Arms	Black	361	370	388	406	433	492	510
CLK13B	Medium	Asynchron	Adjustable Arms	Black	376	385	403	421	448	507	525
CLK33B	Medium	Synchro	Adjustable Arms	Black	376	385	403	421	448	507	525
CLK4B	Medium	PCB	Adj. Arms & Leather Pads*	Black	393	402	420	438	465	524	542
CLK14B	Medium	Asynchron	Adj. Arms & Leather Pads*	Black	408	417	435	453	480	539	557
CLK34B	Medium	Synchro	Adj. Arms & Leather Pads*	Black	408	417	435	453	480	539	557
CLK5B	High	PCB		Black	333	342	360	378	405	464	482
CLK15B	High	Asynchron		Black	348	357	375	393	420	479	497
CLK35B	High	Synchro		Black	348	357	375	393	420	479	497
CLK6B	High	PCB	Fixed Arms	Black	366	375	393	411	438	497	515
CLK16B	High	Asynchron	Fixed Arms	Black	381	390	408	426	453	512	530
CLK36B	High	Synchro	Fixed Arms	Black	381	390	408	426	453	512	530
CLK7B	High	PCB	Adjustable Arms	Black	388	397	415	433	460	519	537
CLK17B	High	Asynchron	Adjustable Arms	Black	403	412	430	448	475	534	552
CLK37B	High	Synchro	Adjustable Arms	Black	403	412	430	448	475	534	552
CLK8B	High	PCB	Adj. Arms & Leather Pads*	Black	420	429	447	465	492	551	569
CLK18B	High	Asynchron	Adj. Arms & Leather Pads*	Black	435	444	462	480	507	566	584
CLK38B	High	Synchro	Adj. Arms & Leather Pads*	Black	435	444	462	480	507	566	584
CLK21B	Medium	Cantilever	Fixed Arms	Black	252	261	279	297	324	383	401
CLK22B	Medium	Cantilever	Fixed Arms	Black	287	296	314	332	359	418	436

*Black Leather pads on top with chair fabric underneath

Options

SS	Seat Slide	£30
A	Polished Aluminium Base	£30
P	Silver Cantilever	No Extra
C	Chrome Cantilever	£30
HR	Head Rest	£60
M	Memory Seat Foam	£15

Example Coding :-

CLK3HRB

Medium Back Chair
PCB Mechanism
Chrome Adjustable Arms
Head Rest
Black Moulded Base

Code	A	B	C	D	E	F	G	MTR
CLK1B	550-610	460-570	470	600	530	480		1.50
CLK11B	550-610	460-570	470	600	530	480		1.50
CLK31B	550-610	460-570	470	600	530	480		1.50
CLK2B	550-610	460-570	470	600	600	480		1.50
CLK12B	550-610	460-570	470	600	600	480		1.50
CLK32B	550-610	460-570	470	600	600	480		1.50
CLK3B	550-610	460-570	470	600	610	480		1.50
CLK13B	550-610	460-570	470	600	610	480		1.50
CLK33B	550-610	460-570	470	600	610	480		1.50
CLK4B	550-610	460-570	470	600	630	480		1.50
CLK14B	550-610	460-570	470	600	630	480		1.50
CLK34B	550-610	460-570	470	600	630	480		1.50
CLK5B	600-660	460-570	470	600	530	480		1.70
CLK15B	600-660	460-570	470	600	530	480		1.70
CLK35B	600-660	460-570	470	600	530	480		1.70
CLK6B	600-660	460-570	470	600	600	480		1.70
CLK16B	600-660	460-570	470	600	600	480		1.70
CLK36B	600-660	460-570	470	600	600	480		1.70
CLK7B	600-660	460-570	470	600	610	480		1.70
CLK17B	600-660	460-570	470	600	610	480		1.70
CLK37B	600-660	460-570	470	600	610	480		1.70
CLK8B	600-660	460-570	470	600	630	480		1.70
CLK18B	600-660	460-570	470	600	630	480		1.70
CLK38B	600-660	460-570	470	600	630	480		1.70
CLK21B	500	440	470	550	530	480		1.50
CLK22B	500	440	470	550	600	480	670	1.50

Dimensions

Clík

Special Needs

Ethos

Special Needs

Standard Features: -

- Two Back Styles with Optional Adjustable Headrest
- Height Adjustable Back
- Seat Height Adjustment
- Inflatable Lumbar
- Choice of 2D or 3D Adjustable Arms
- Asynchron Mechanism with Side Button Operation
- Seat Depth Adjustment
- CMHR Moulded Foam
- Black Moulded Base



Code	Back	Mechanism	Arms	Finish	GP1	GP2	GP3	GP4	GP5	GP6	GP8
ET23B	High	Asynchron	2 Dimensional Arms	Black	602	611	629	647	674	733	751
ET26B	High & Headrest	Asynchron	2 Dimensional Arms	Black	665	674	692	710	737	796	814
ET27B	Medium Shaped	Asynchron	3 Dimensional Arms	Black	567	576	594	612	639	698	716
ET28B	High Shaped	Asynchron	3 Dimensional Arms	Black	602	611	629	647	674	733	751
ET29B	High Shaped & Headrest	Asynchron	3 Dimensional Arms	Black	665	674	692	710	737	796	814

Options

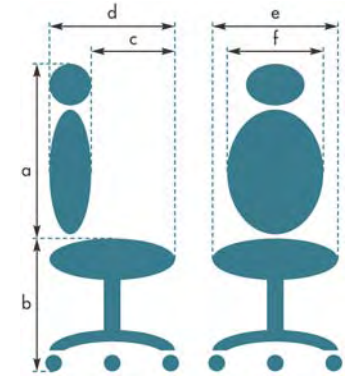
MR	Memory Foam Arm Pads (2D only)	£6
M	Memory Seat Foam	£15
NA	No Arms* (3D Models)	-£57
A	Polished Aluminium Base	£26

*No Arm option on models with 2D Arms is -£55

Example Coding :- ET23MRB

- Medium Back Chair
- Asynchron Mechanism
- Inflatable Lumbar
- 2D Adjustable Arms
- Memory Foam Arm Pads
- Black Moulded Base

- a = Back Height
- b = Seat Height
- c = Seat Depth
- d = Overall Depth
- e = Overall Width
- f = Back Width
- g = Floor to Arm Height
(cantilever & leg chairs only)



Code	A	B	C	D	E	F	G	MTR
ET23B	540-600	410-500	440-490	580-630	440	670		1.55
ET26B	700-760*	410-500	440-490	580-630	440	670		1.70
ET27B	520-600	410-500	440-490	580-630	440	670		1.20
ET28B	650-730	410-500	440-490	580-630	440	670		1.45
ET29B	650-730*	410-500	440-490	580-630	440	670		1.60

*Add 180mm for a Head Rest. The headrest has the following adjustments :-

- Height Adjustment = 100mm
- Depth Adjustment = 120mm

Ethos & Task
Special Needs

Task

Special Needs

Standard Features: -

- Pelvic Posture Principle
- Two Back Sizes
- Height Adjustable Back
- Seat Height Adjustment
- Synchro or Asynchron Mechanisms
- CMHR Moulded Foam
- Chrome Adjustable Arms (Height & Width)
- Polished Aluminium Base



Code	Back	Mechanism	Arms	Finish	GP1	GP2	GP3	GP4	GP5	GP6	GP8
20-30	Medium	Synchro	Adj. Arms & Leather Pads*	Chrome	506	515	533	551	578	637	655
20-25	Medium	Asynchron	Adj. Arms & Leather Pads*	Chrome	506	515	533	551	578	637	655
20-20	High	Asynchron	Adj. Arms & Leather Pads*	Chrome	510	519	537	555	582	641	659
20-15	High	Synchro	Adj. Arms & Leather Pads*	Chrome	510	519	537	555	582	641	659

Options

MR	Memory Foam Arm Pads	£6
M	Memory Seat Foam	£15
NA	No Arms	-£87
HR	Head Rest	£60
SS	Seat Slide	£30

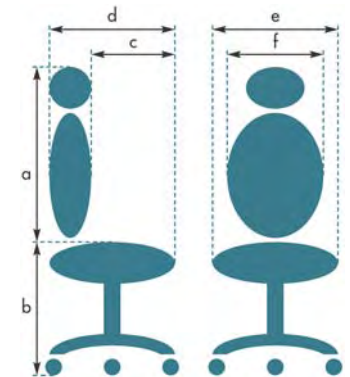
*Black Leather pads on top with chair fabric underneath

Example Coding :- 20-20/NA

- High Back Chair
- Asynchron Mechanism
- No Arms
- Polished Aluminium Base

Dimensions

- a = Back Height
- b = Seat Height
- c = Seat Depth
- d = Overall Depth
- e = Overall Width
- f = Back Width
- g = Floor to Arm Height
(cantilever & leg chairs only)



Code	A	B	C	D	E	F	G	MTR
20-30	590-650	460-570	440	540	660	500		1.65
20-25	590-650	460-570	440	540	660	500		1.65
20-20	630-700	460-570	440	540	680	420		1.65
20-15	630-700	460-570	440	540	680	420		1.65

75

Prices

74